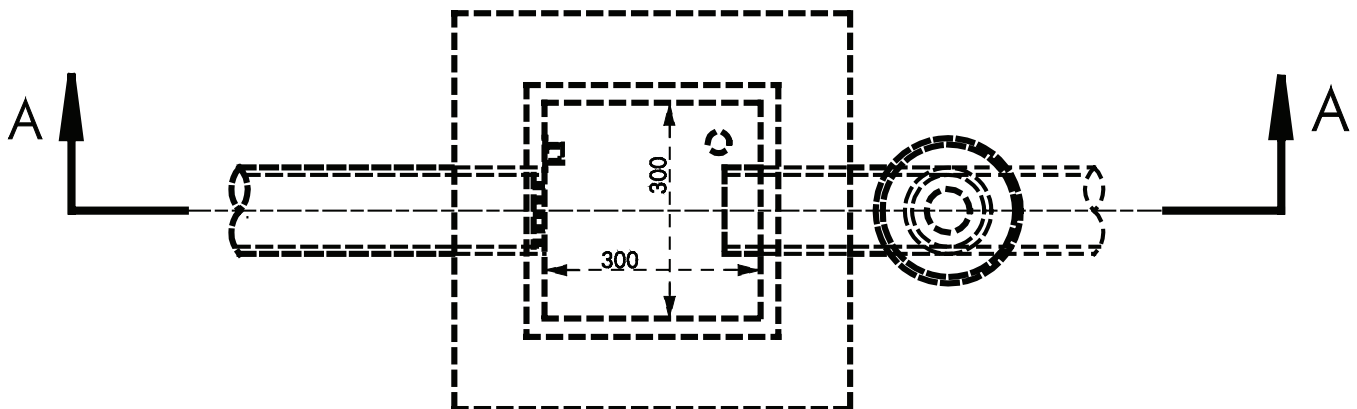


**SECTION A - A**



**PLAN**  
(cover removed)

**Notes:**

1. 32mm x 32mm x 25mm deep polyvinyl chloride (P.V.C) bracket to be fitted as close as practical to the outlet.
2. 150mm x 25mm x 25mm cement mortar test block to be supplied and fitted by South East Water's authorised officer.
3. The Test sump must be constructed, installed and connected in accordance with the relevant plumbing regulations.
4. The Test sump must be located in a position to provide ready access for maintenance, inspection and sampling purposes.
5. The Test sump shall be constructed from a material that is suitable for the quality of waste.